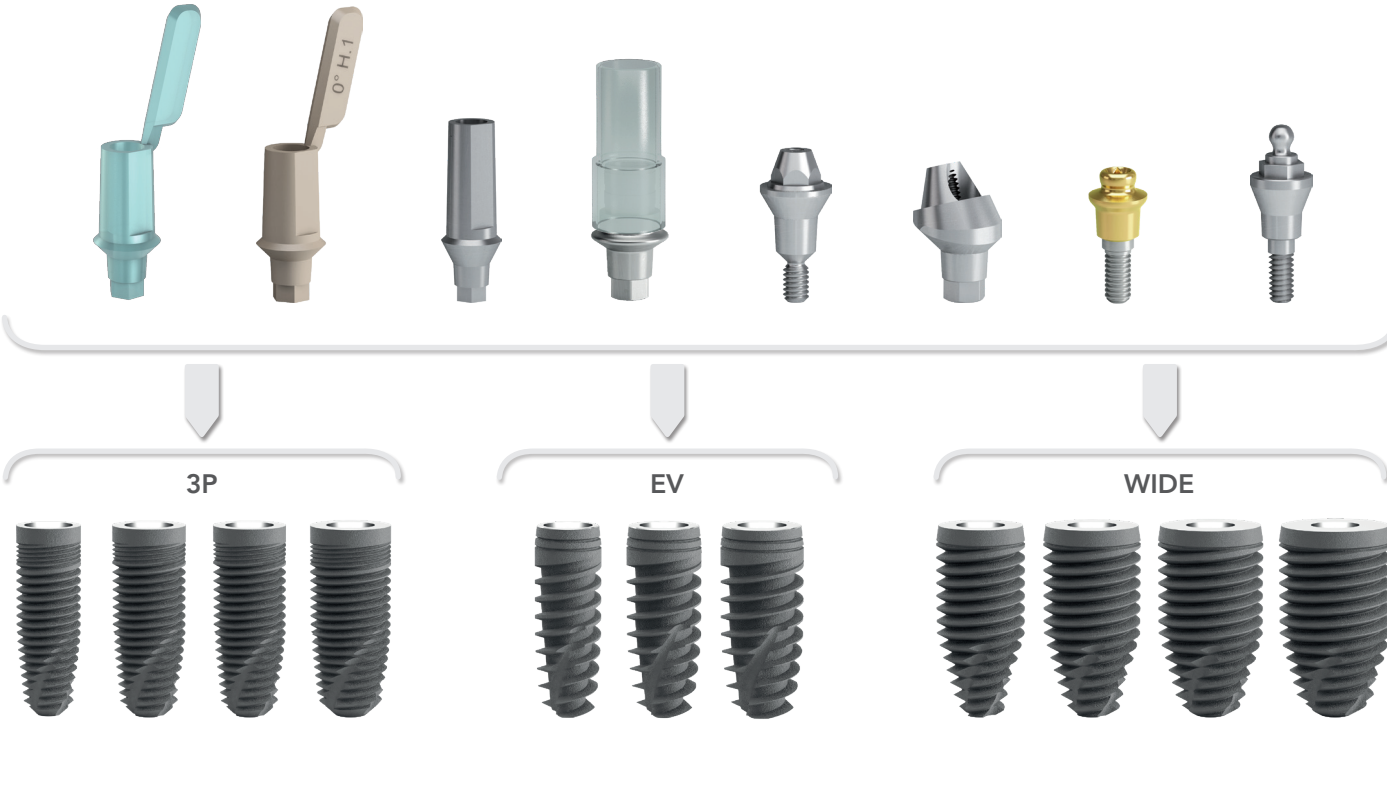


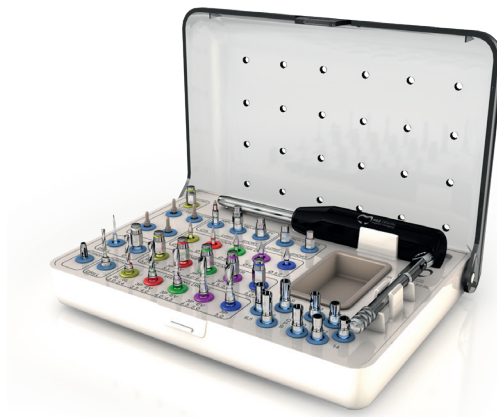
UNIQUE PROSTHETIC CONNECTION

Thanks to a single prosthetic connection (hole of diameter 3 mm) B. & B. Dental prosthetic components are compatible with all 3P, EV and WIDE implants, regardless of the abutment or pillar chosen and the diameter of the dental implant.



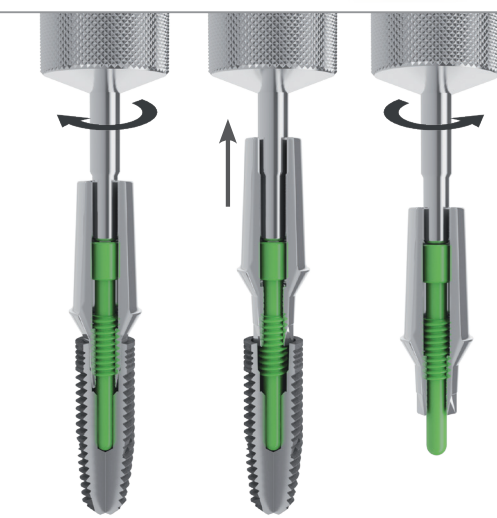
SINGLE KIT FOR EV/3P/SLIM IMPLANTS

Suitable for EV, 3P and SLIM implants. Produced and designed complete with drills, compactors-expanders, metal stops, implant drivers, screwdrivers, straight manual key and universal ratchet.



UNLOCKING SYSTEM

Unique "EXTRACTOR" screw (Ref. INN-6060) to release the mechanical "cold weld" between implant and abutment locked together by the Morse effect.



Via S. Benedetto, 1837 - 40018 San Pietro in Casale (BO) Italy
Tel. +39 (0) 51.81.13.75 - Fax +39 (0) 51.666.94.00
info@bebdental.it - www.bebdental.it



UNI EN ISO 13485 certificates



COMPANY

B&B Dental is an Italian leading company in oral implantology, specialized in the production of dental implants and materials for bone regeneration.

Established in 1992 in San Pietro in Casale, near Bologna, the main city in Emilia-Romagna, one of the wealthiest and most developed regions in Europe, with Italy's highest quality of life indices, worldwide famous industries (packaging, pharmaceutical, food and automotive companies such as Ferrari, Lamborghini, Maserati and Ducati) and home of the University of Bologna, the oldest university in the world.

Over 20 years of research, development and production are in compliance with an innovative design for providing dentists with a wide range of items based on reliability and comfort in use.

B & B Dental founder, Dr. Claudio Banzi, has an experience of more than 20 000 implants placed, hundreds of lectures gave around the world and surgeons trained; he has spread values which are: integrity, knowledge sharing and innovation.

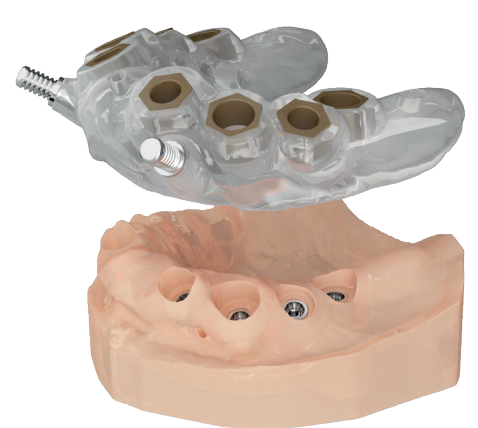
B & B Dental is constantly improving its own products and techniques by listening to customer needs and their issues. Experience allows us to produce materials designed and tested in our structures and certified in different countries, supported by a staff which is composed by qualified engineers and mechanical experts.

A rationalized warehouse, technical trainings organized worldwide, a careful and a qualified Customer Service working with over 60 countries are additional strengths which elevate our Company among the excellence of manufacturers of dental implantology.

Since 2015, the exclusive B&B Dental Guided Surgery project has been introduced. B&B Dental firmly sustains doctors and technicians for a complete support from the CT scan to the surgical guide creation, thanks to the most advanced 3D printers and high quality materials.

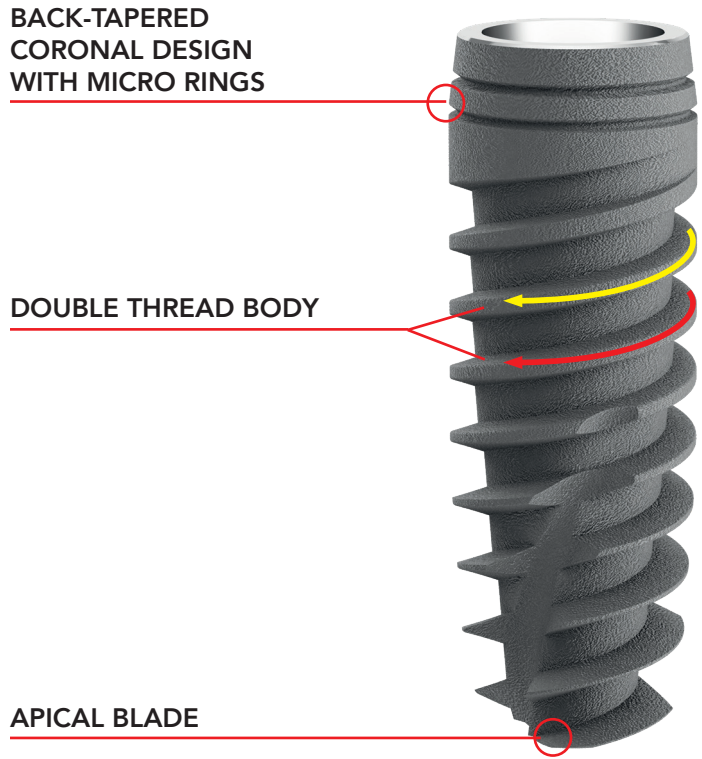


CE 0123



DURAVIT EV IMPLANT

EV Implant: indicated for cases involving spongy bone, post-extraction conditions, small diameter preparations and immediate loads. For its specific characteristics guarantees the achievement of higher primary stability and an optimal control during the implant insertion, giving also the opportunity to change its direction.



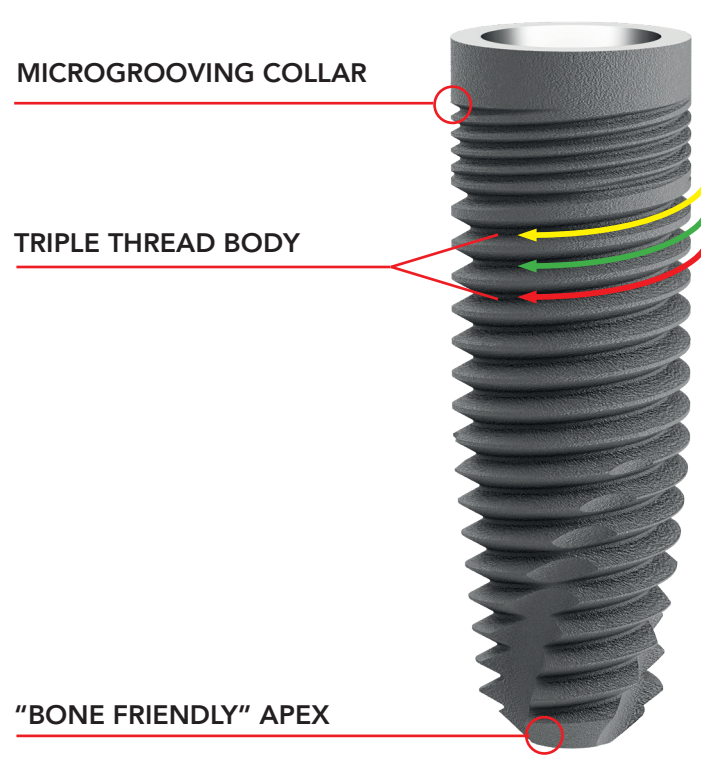
CODE	LENGHT	Ø
EV-4008	8	4.0
EV-4010	10	4.0
EV-4012	12	4.0
EV-4014	14	4.0

CODE	LENGHT	Ø
EV-4508	8	4.5
EV-4510	10	4.5
EV-4512	12	4.5
EV-4514	14	4.5

CODE	LENGHT	Ø
EV-5006	6	5.0
EV-5008	8	5.0
EV-5010	10	5.0
EV-5012	12	5.0
EV-5014	14	5.0

DURAVIT 3P IMPLANT

Duravit 3P Implant: indicated for all surgical procedures and excellent in all types of bone. Its specific characteristics ensure optimal control during implant insertion and achievement of high primary stability.



CODE	LENGHT	Ø
3P-3508	8	3.5
3P-3510	10	3.5
3P-3512	12	3.5
3P-3514	14	3.5

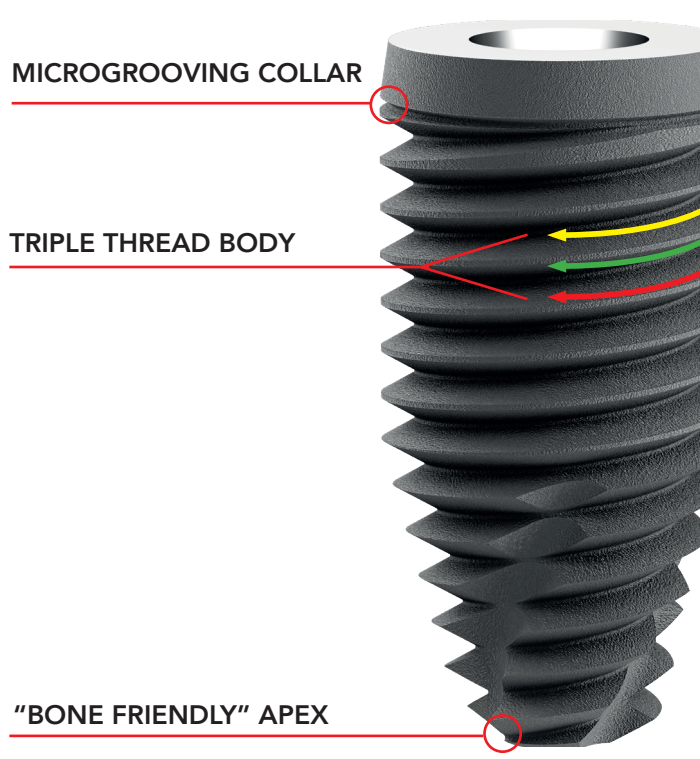
CODE	LENGHT	Ø
3P-4006	6.5	4.0
3P-4008	8	4.0
3P-4010	10	4.0
3P-4012	12	4.0
3P-4014	14	4.0

CODE	LENGHT	Ø
3P-4508	8	4.5
3P-4510	10	4.5
3P-4512	12	4.5
3P-4514	14	4.5

CODE	LENGHT	Ø
3P-5006	6.5	5
3P-5008	8	5
3P-5010	10	5
3P-5012	12	5
3P-5014	14	5

DURAVIT WIDE IMPLANT

Duravit WIDE Implant: with a larger-than-conventional diameter it has a wide body designed for an immediate placement in a pre-molar and/or molar post-extractive site. The result is an excellent placement of the implant which minimizes the bone loss and the necessity for bone graft, reducing also the treatment time increasing patient's acceptance.



CODE	LENGHT	Ø
WIDE-5506	6.5	5.5
WIDE-5508	8	5.5
WIDE-5510	10	5.5
WIDE-5512	12	5.5
WIDE-5514	14	5.5

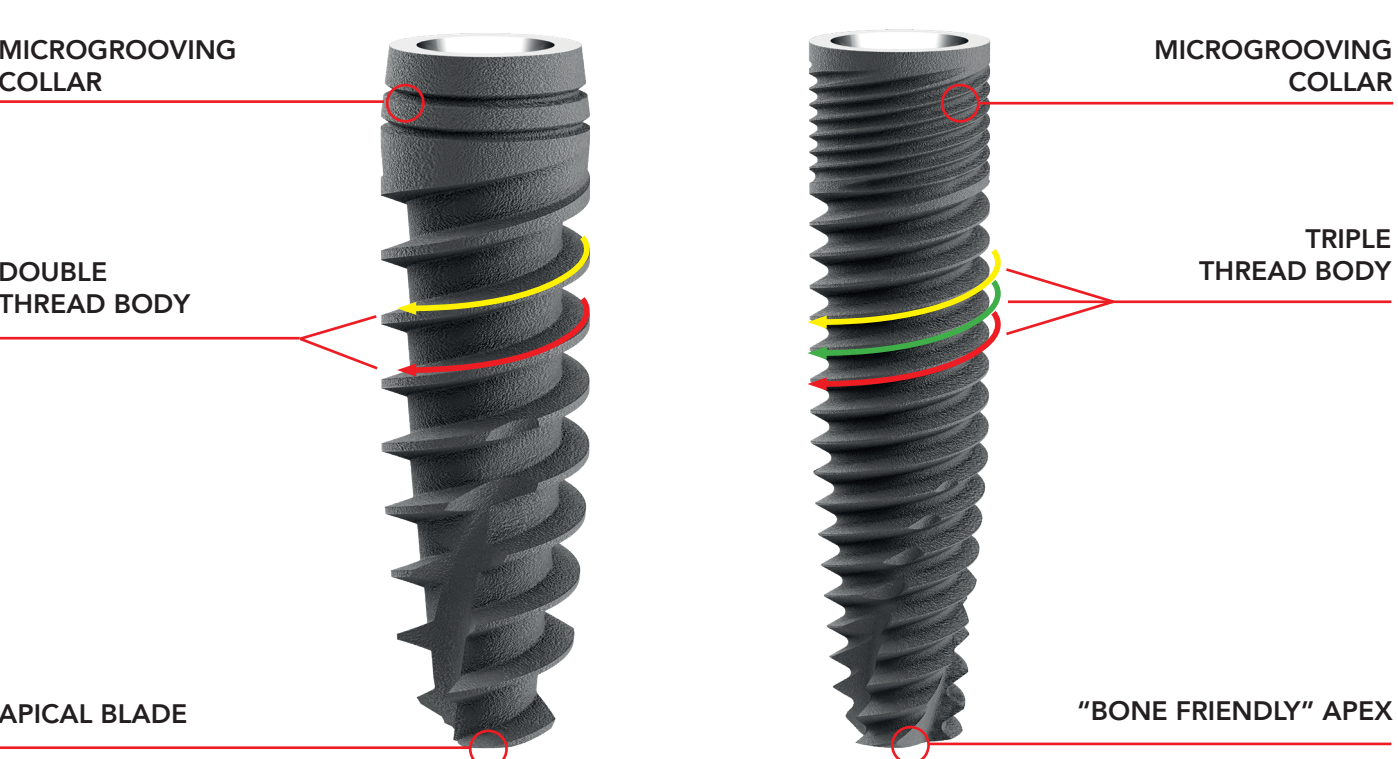
CODE	LENGHT	Ø
WIDE-6006	6.5	6.0
WIDE-6008	8	6.0
WIDE-6010	10	6.0
WIDE-6012	12	6.0
WIDE-6014	14	6.0

CODE	LENGHT	Ø
WIDE-6506	6.5	6.5
WIDE-6508	8	6.5
WIDE-6510	10	6.5
WIDE-6512	12	6.5
WIDE-6514	14	6.5

CODE	LENGHT	Ø
WIDE-7006	6.5	7.0
WIDE-7008	8	7.0
WIDE-7010	10	7.0
WIDE-7012	12	7.0
WIDE-7014	14	7.0

DURAVIT SLIM IMPLANT

Duravit SLIM Implant: specifically designed for restorations in aesthetic zones. It offers great esthetic results and it is the best solution for safely treating the most difficult cases of single-tooth edentulous mandibular incisors, as well as cases of maxillary lateral agenesis.



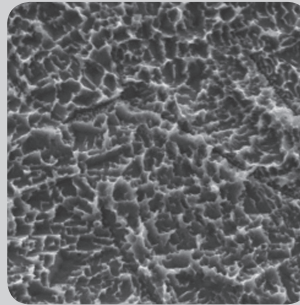
CODE	LENGHT	Ø
SL-3408	8	3.4
SL-3410	10	3.4
SL-3412	12	3.4
SL-3414	14	3.4

CODE	LENGHT	Ø
3P-3008	8	3.0
3P-3010	10	3.0
3P-3012	12	3.0
3P-3014	14	3.0

COMMON FEATURES

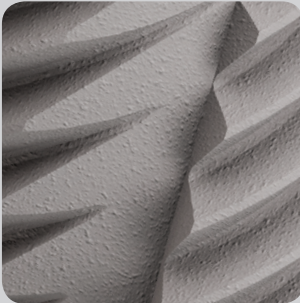
TREATMENT

BioActive - a unique Double Acid Etching treatment - modifies nanostructure implant surface that stimulates bone's formation, shortening the sseointegration time and provides stronger bone-to-implant bonding, which means long term stability.



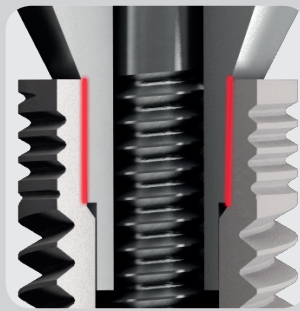
SELF-TAPPING SYSTEM

The triple apical groove of Duravit 3P implants has been designed with a special sharp skewed section that promotes bone tapping during the insertion and prevents at the same time any trauma resulted from pressure.



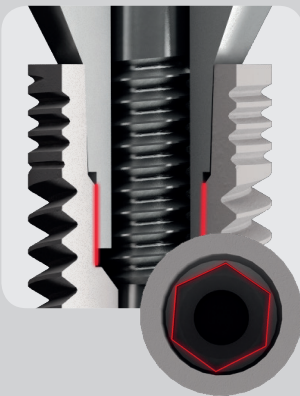
MORSE TAPER CONICAL CONNECTION

- Cold weld seal
- Elimination of micro-movements
- Elimination of screw loosening



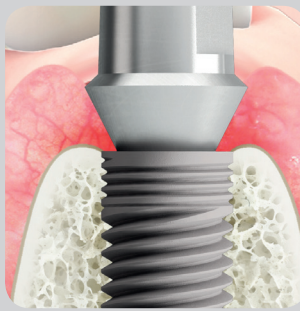
INTERNAL HEXAGON

ANTIROTATIONAL SECURITY
Morse taper connection. The hexagon enhances the resistance to torsional loads.



PLATFORM SWITCHING

- Reduction of bone loss
- Long term esthetic stability
- Perfect closure of the gingiva
- Reduction of bacterial infiltration
- Reduce the reabsorption of the bone ridge
- Better esthetic aspect.



PERFECT ANATOMICAL DESIGN

Tapered body substitutes the tooth radicular structure.



MINI DURAVIT IMPLANT

MINI Duravit Implant: indicated for the healing period after treatment with conventional implants, in order to stabilize removable dental prostheses for temporary use with a minimally invasive transmucosal technique. Also designed for definitive restoration of full-arches or partial prosthesis.

Ø 2	lengths: 10-13-15 mm
Ø 2.4	lengths: 10-13-15 mm
Ø 2.5	lengths: 10-13-15 mm
Ø 2.4	lengths: 10-13-15 mm
Ø 2.5	lengths: 10-13-15 mm

